



Sustainable Blue
Economy Partnership

Innovative Lösungen für die EU Blaue Wirtschaft

Julie Olivier (Projekträger Jülich)
Webinar der NKS Biodiversität und Umwelt, 20.4.2026





Sustainable Blue Economy Partnership (SBEP)



- ▶ Thema
- ▶ EU-Mehrwert
- ▶ Struktur und Rolle Deutschlands
- ▶ Beteiligungsmöglichkeiten
 - ▶ Fördermöglichkeiten
 - ▶ Zugang zu Forschungsinfrastrukturen
 - ▶ Teilnahme an regionalen Portfolios





EU Blaue Wirtschaft

- ▶ F&I für die grüne, digitale und gerechte Transition
- ▶ Ziele: Wettbewerbsfähigkeit, Resilienz und Nachhaltigkeit





Wirkungsorientiertes Meereswissen für globale Führungsrolle

EU-Ozeanpakt > Meeresgesetz (Politische Kohärenz)

Gesundheit der Meere

Wettbewerbsfähige Wirtschaft

Küstengemeinschaften

Forschung und Wissen

Sicherheit und Verteidigung

Multilateralismus



VN-Meereskonferenz (Juni 2025): EU-Ozeanpakts



EU Ocean Days (März 2026): Meeresbeobachtung

Partnership in a Changing World



**Co-funded Partnership
(Horizon Europe)
EUR 250m (2021-2029)**

co-branded by:

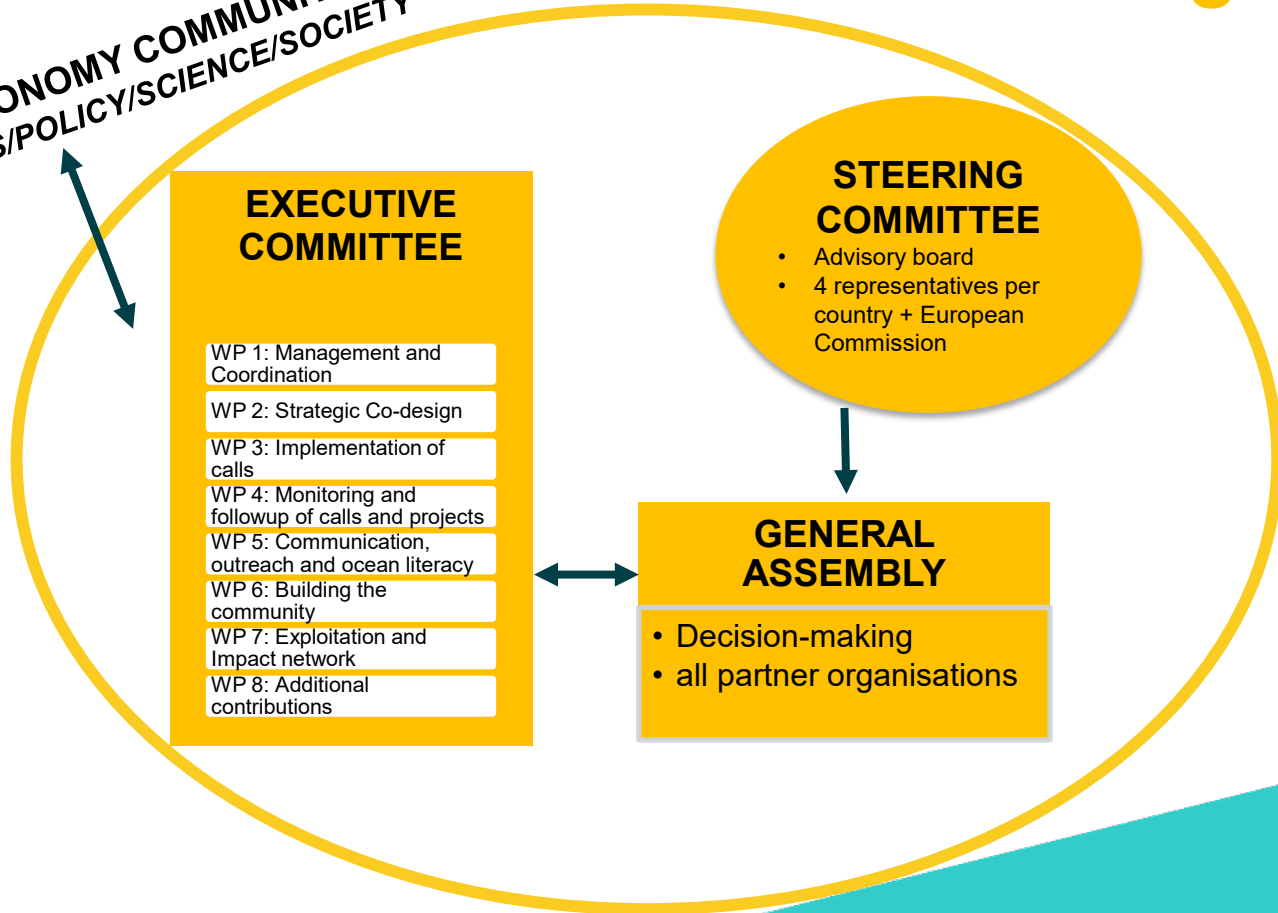




Structure & co-design

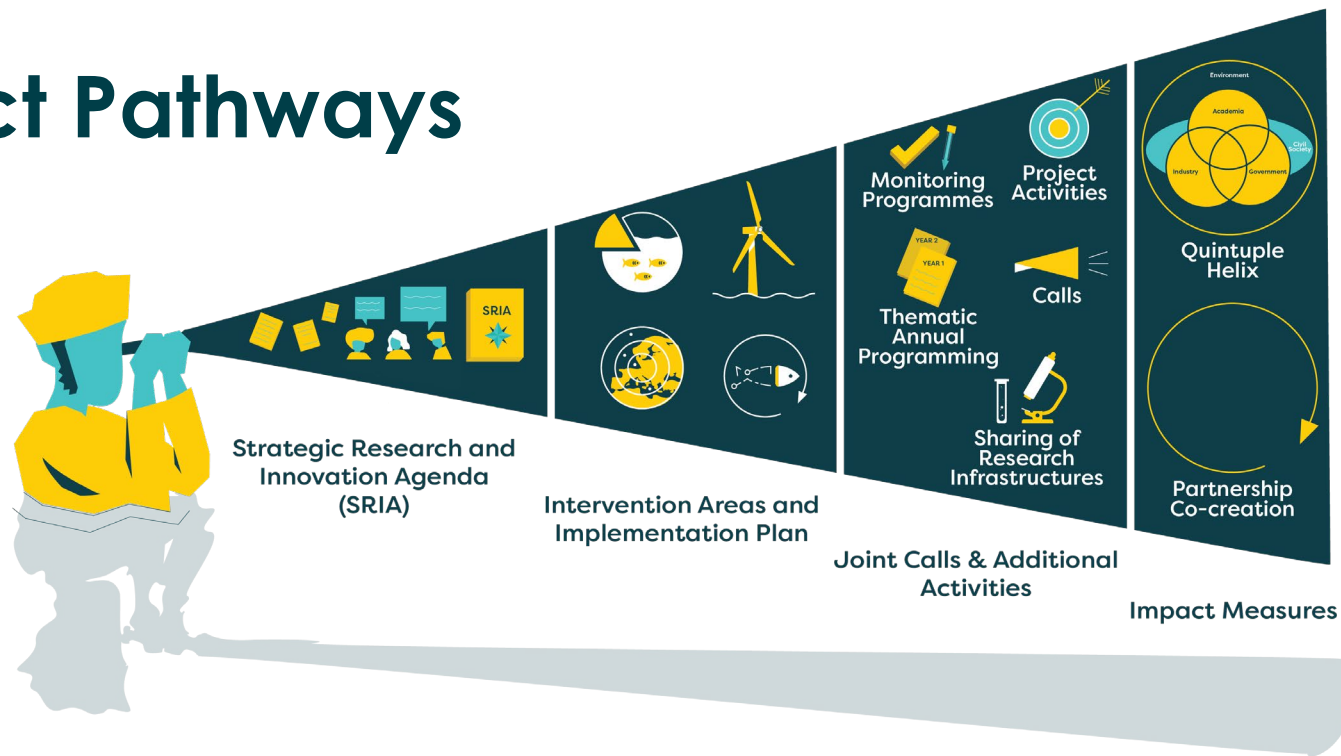
BLUE ECONOMY COMMUNITY
BUSINESS/POLICY/SCIENCE/SOCIETY

German Partners





Impact Pathways





Beteiligungsmöglichkeiten





Apply to Joint Transnational R&I Calls !

Call 2023 + Call 2024 + Call 2025 + Call 2026 + Call 2027 + Call 2028

19

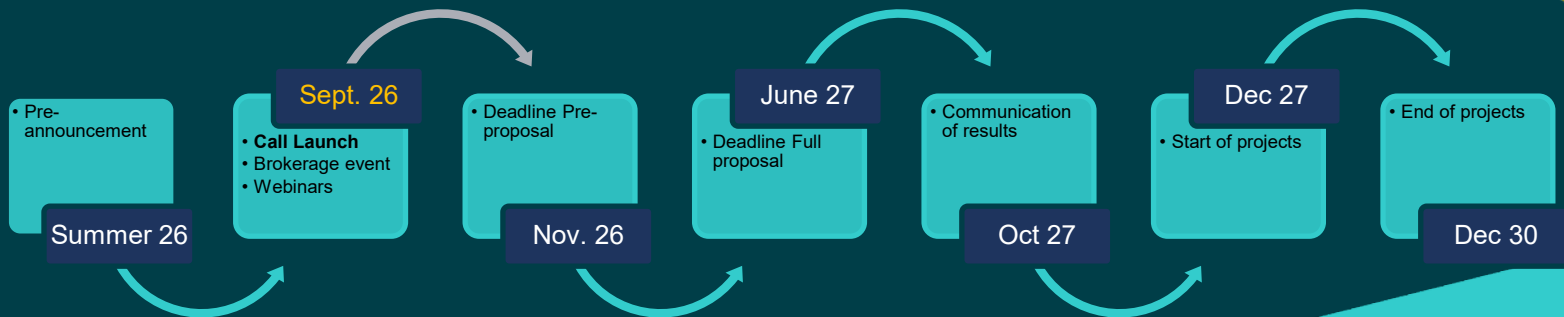
projects

24

projects

137

pre-proposals





Check national eligibility rules!

Application Process

- ▶ Min. 3 participating countries from min. 2 European sea basins
- ▶ Open Science and FAIR Data (Data Management Plan)
- ▶ Quadruple helix with private sector as (self-funded) partners

Stage 1: Pre-proposal Submission

- **Mandatory Step**
- General and national/regional **eligibility checks**
- **Evaluation** by an International Evaluation Committee (IEC)
 - **3 independent evaluators**
 - **2 evaluation criteria: Excellence and Impact**

Stage 2: Full proposal Submission

- **Invited applicants only**
- General and national/regional **eligibility checks**
- **Evaluation** by an International Evaluation Committee (IEC)
 - **3 independent evaluators**
 - **3 evaluation criteria: Excellence, Impact, Quality and efficiency of implementation**

- ▶ Which intervention areas?
- ▶ Only 2 German partners in a consortium are eligible. The prerequisite for 2 German partners in a consortium is that at least 1 partner can be classified as a company.
- ▶ Maximum funding per awarded project partner: EUR 250,000. Maximum funding per awarded project (for the maximum of 2 project partners together): EUR 350,000. The distribution of funds between the two partners is left up to them.



Overview of co-funded projects (Germany)

<i>Intervention Areas</i>	Call 2023 BMFTR 1.25 m EUR (2.5 m)	Call 2024 BMFTR 1.5 m EUR (2 m)
MANAGING SEA USES	BlueEcho (AWI) MEDSEAPLAN (Hereon)	AQUASPECT (GEOMAR) CodeBlue (IOW, AquaEcology GmbH & Co. KG)
TRANSITIONING BLUE ECONOMY	INSPIRE (Fraunhofer IWES, Siemens AG)	BluePortLab (Kühne Logistics University gGmbH) EVOLVE (Fraunhofer IEE) OCEAN-H2 (Fraunhofer)
BLUE BIORESOURCES	FOODIMAR (Submariner Network) FunSea (Fraunhofer IMTE) CliN_BluFeed (AWI)	
DIGITAL TWINS OF OCEAN	DTO-Track (GEOMAR)	CORRASBlue (BAM) DTO4OWE (Hereon) DIVE (DLR)



Seafood side-streams are the parts of fish that are typically not used or consumed directly, such as heads, bones, skin, and shells, among other parts. These can come from fisheries by-catch, discards from aquaculture, and the processing industry.

≈20-80% of the fish weight ends as side-streams depending on the fish species and processing technology (1).

Often these side-streams are discarded or used for low-value purposes such as animal feed or in the energy sector.

Seafood side-streams contain valuable bioactive compounds with added value in high-end markets such as nutraceuticals and functional foods (2).



Valuable components & fish by-products uses (3)



Frames (bones, flesh, fins)

Valuable components: proteins, peptides, lipids, collagen, gelatine, minerals (Ca), flavour
Uses: food, fish meal, fish oil, food grade hydrolysates, animal grade hydrolysates, pet food, nutraceuticals, cosmetics



Heads

Valuable components: proteins, peptides, lipids, collagen, gelatine, minerals (Ca), flavour
Uses: food, fish meal, fish oil, foodgrade hydrolysates, animal grade hydrolysates, pet food, nutraceuticals, cosmetics

Viscera

Valuable components: proteins, peptides, lipids, enzymes such as lipases
Uses: food, fish meal, fish oil, food-grade hydrolysates, animal-grade hydrolysates, pet food



Blood

Valuable components: proteins, peptides, lipids, thrombin and fibrin
Uses: fuel, fertiliser, therapeutants



Skin (with belly flap)

Valuable components: collagen, gelatine, lipids, proteins, peptides, minerals, flavor
Uses: food-grade hydrolysates, animal-grade hydrolysates, fish meal, fish oil, fuel, fertilizers



Trimmings

Valuable components: proteins, peptides, lipids,
Uses: food grade hydrolysates, animal grade hydrolysates, fish meal, fish oil, fuel, fertilizers

References

- (1) [Erasmó et al. 2024](#)
- (2) [Al Khawli et al. 2019](#)
- (3) [Stevens, et.al. 2018](#)





Intervention Areas 2026



Transitioning blue economy

- Multi-use
- Strategic autonomy (energy, food, underwater domain, and communication)
- Circularity of marine infrastructures



Managing sea-uses

- Science-based approaches to sustainable, ecosystem-based planning and management of sea uses
- Decision-Support-Tools interlinking MSFD, MSP, NRR, CFP, WFD
- Ecosystem service assessment



Blue Bioresources

- Aquaculture
- Fisheries
- Blue bio tech



Resilient coastal communities & businesses

- Tourism
- Resilience of coastal infrastructures
- Social innovation for diversification
- Climate risk management (sea level rise, extreme weather events, ...)





Get Access to Research Infrastructures

**Rolling Transnational
Access Call to
Research Infrastructures**

- Open from February 2026 to February 2028
- Cut-off dates every 4 months
- **First cut-off on 20 June 2026**

 [More info on our website](#)

 Sustainable Blue Economy Partnership  Co-funded by the European Union

- ▶ Access to approximately 50 Research Infrastructures
 - ▶ Research Vessels
 - ▶ Fixed Platforms & Experimental Stations
 - ▶ Mobile Platforms (AUVs, gliders, aircraft)
 - ▶ Analytical Laboratories & Test Benches
 - ▶ High Performance Computing & Digital
 - ▶ Virtual Access to data infrastructures
- ▶ Very simple application form!
- ▶ At least 2 partners from 2 different countries
- ▶ Access costs covered BUT not operational costs of user team
- ▶ MARVEL (OSCM, GEOMAR; JASCO Applied Sciences); MACAROCONNECT (OSCM, GEOMAR); MOOSE_GE2026



Thematic Portfolios of Projects

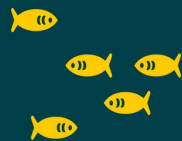
Marine Algae Cultivation

SEAGROW (*CINEA, EMFAF*), BIOVAL, Blue Bio Boost,
SEAFOODTURE, BlueBoost, SEAREFINERY,
SeaAlgaePower (*SBEP*), CIRCALGAE (*Horizon Europe*)
MARMADÉ, Alliance (*CBE-JU*), AlgaeProBANOS (*Mission*)



© Seafoodture

Small-scale Fisheries



DORIS (*SBEP Call 2*)
CAFF (*EMFAF*)
OPTIFISH (*FARM2FORK*)
NETTAG+ (*Mission*)



© Thünen-Institut/Daniel Stepputtis



5 Regional Portfolios of Projects

Upcoming Calls for Expression of Interest!

<https://bluepartnership.eu/>



◀ Stay updated



EMD 2026 WORKSHOP

OCEAN (FUNDING) UNDER THE NEXT MFF

Limassol, Cyprus

11:25–12:40, 22 May 2026



Sustainable Blue
Economy Partnership



Co-funded by
the European Union



Sustainable Blue Economy Partnership

j.olivier@ptj.de (Brüsseler Büro)
SBEP@mur.gov.it (Koordination)
b.kuerten@ptj.de (Strategisches Co-Design)

www.bluepartnership.eu
[@BlueEconomyEU](https://twitter.com/BlueEconomyEU)



Co-funded by
the European Union

EUROPEAN PARTNERSHIP

